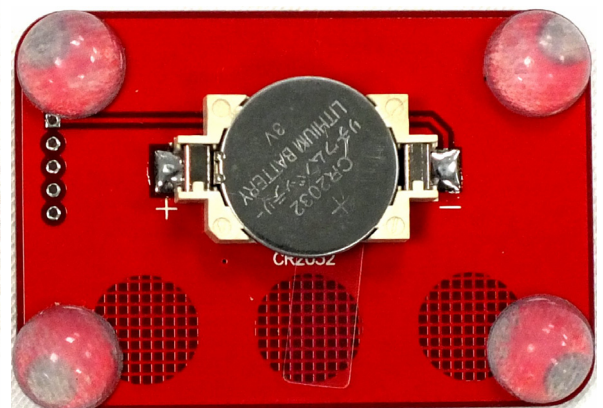
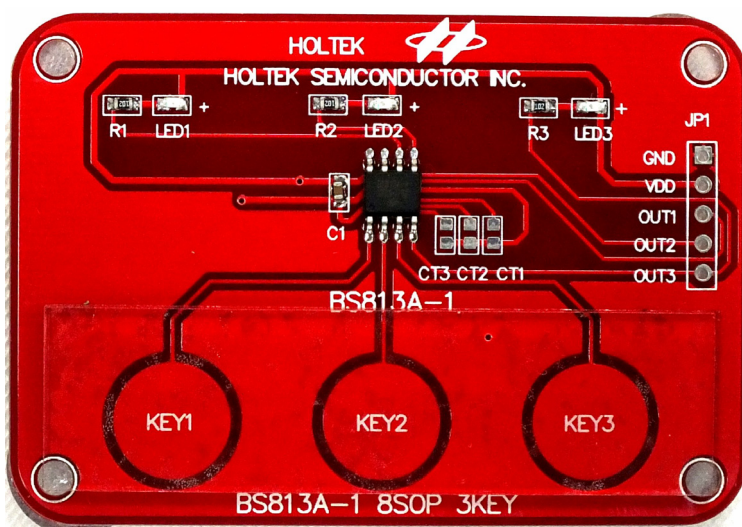


Standard 3-Touch Keys

BS813A-1

Characteristics

- Touch Keys : BS813A-1 8-pin SOP
- Operating voltage : 2.2V ~ 5.5V
- Low standby current
- Auto-calibration
- Reliable touch detections
- High power supply rejection
- Standby and normal operating power modes
- Maximum key on duration time detection
- Power Supply Voltage Drop Rejection function
- 3 touch inputs
- 3 Output - NMOS with internal pull-highs
- Level hold, low active
- Sensitivity adjustment using an external capacitor
- Minimal number of external components



Applications

Consumer Products, Home Appliances, Industrial Control, Health Care Products, etc.

Application Circuit

